

DD series

Features

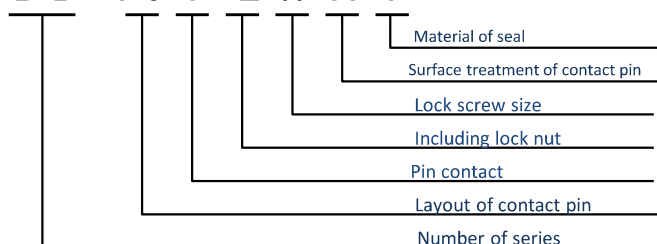
- DD series are designed for D-sub type
- It has no practical problem to corrode the metal housing by using Stainless
- It is providing superior airtight(1×10^{-10} Pa m³/sec) with glass sealing(helium gas test)

■ structure and surface treatment

- Flange of metal housing is grooved for Seal
- Flange of metal housing is finished surface with nickel plating

■ Parts Number

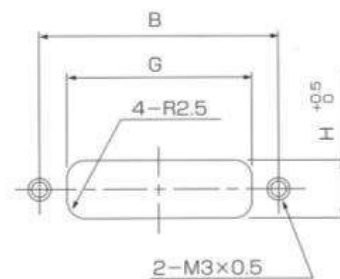
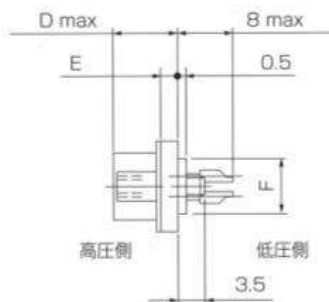
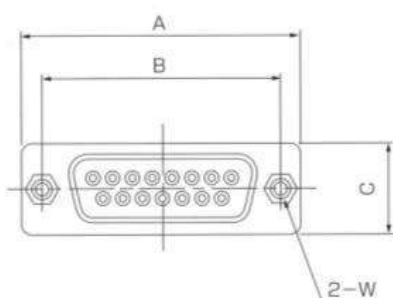
DD-15PLWX Y



W	Lock screw size
U	No.4-40UNC
M	M2.6 x 0.45

X	surface treatment of contact pin
1	Nickel plating
2	Gold plating
3	others

Y	Material of seal
1	silicon
2	Nitrile
3	Fluorine
4	others

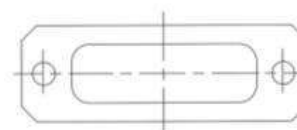


取付部推奨寸法

Part number	A number of Pin	A	B	C	D	E	F	G	H	W
DD-9PLWXY	9	30.8	25.0	12.6	10.5	2.5	7.5	18.0	8	No.4-40UNC or M2.6 x 0.45
DD-15PLWXY	15	39.2	33.3	12.6	10.5	2.5	7.5	26.0	8	
DD-25PLWXY	25	53.0	47.0	12.6	10.5	2.5	7.5	40.0	8	
DD-37PLWXY	37	69.5	63.5	12.6	12.0	4.5	7.5	56.0	8	
DD-50PLWXY	50	66.9	61.1	15.4	12.0	4.5	10.5	51.5	11	

[specification]

- 1) Service Rating : 3A
- 2) Insulation Resistance : 1000MΩ or more (at DC500V)
- 3) Dielectric With standing Voltage : AC500Vms
- 4) air leakage efficiency : under 1×10^{-10} Pa m³/sec
- 5) Surface treatment : Nickel plating



パッキン形状